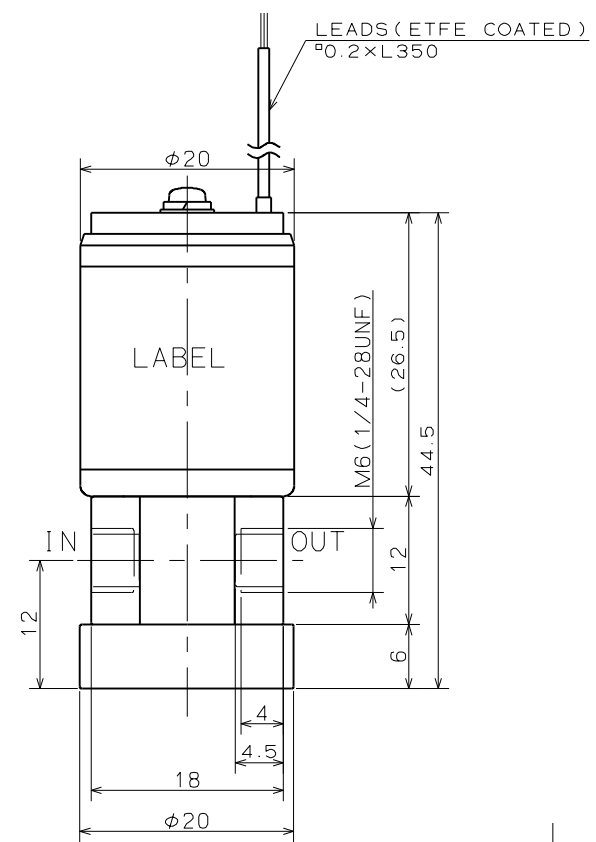


FOR REFERENCE ONLY



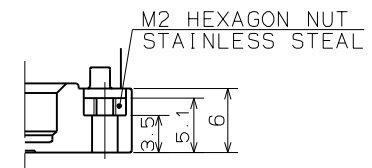
SOLENOID VALVE

SPECIFICATIONS for MODEL STV-02-M6(1/4U)KG

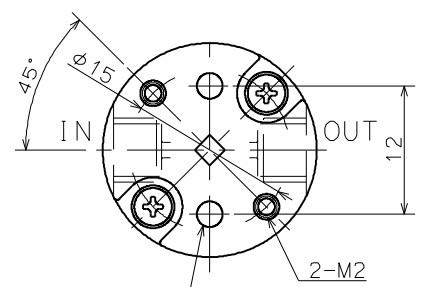
- ORIFICE DIAMETER : 1.2mm
- PORT CONNECTION : M6, 1/4-28UNF
- OPERATING PRESSURE RANGE : IN -50 ~ 200kPa
OUT 0 ~ 50kPa
- FLUID MEDIA : FLUIDS CHEMICALLY COMPATIBLE WITH MATERIALS BELOW
- MEDIA TEMPERATURE RANGE : 5 ~ 50°C
- AMBIENT TEMPERATURE RANGE : 5 ~ 50°C
- RATED VOLTAGE : 12VDC, 24VDC
- POWER CONSUMPTION : 2.5W
- DUTY CYCLE : CONTINUOUS
- COIL TEMPERATURE INCREASE : MAX. 80°C FROM ROOM TEMPERATURE
- INSULATION CLASS : CLASS B
- DIELECTRIC STRENGTH : 1500VAC FOR 60s

NOTE

MODEL NUMBER	PORT CONNECTION
STV-02-M6KG	M6
STV-02-1/4UKG	1/4-28UNF



MOUNTING HOLE DETAILS



2-φ2.4 L5
(FOR M3 TAPPING SCREW)

WETTED MATERIALS

PART NAME	MATERIAL	REQD.	NOTE
DIAPHRAGM	PTFE	1	
SOFT SEALER	DAIEL®PERFLUOR	1	
VALVE BODY	PEEK	1	

SOLENOID VALVE
STV-02-M6(1/4U)KG