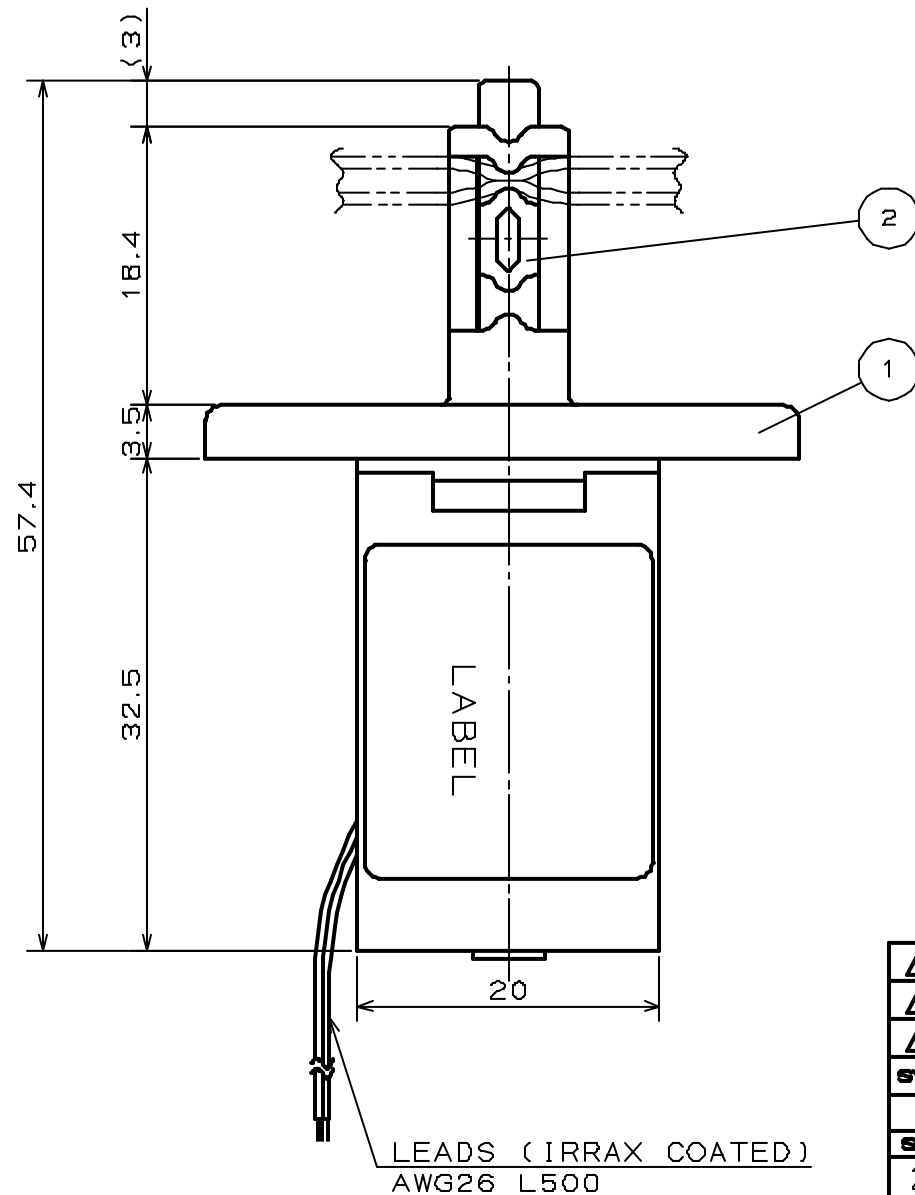
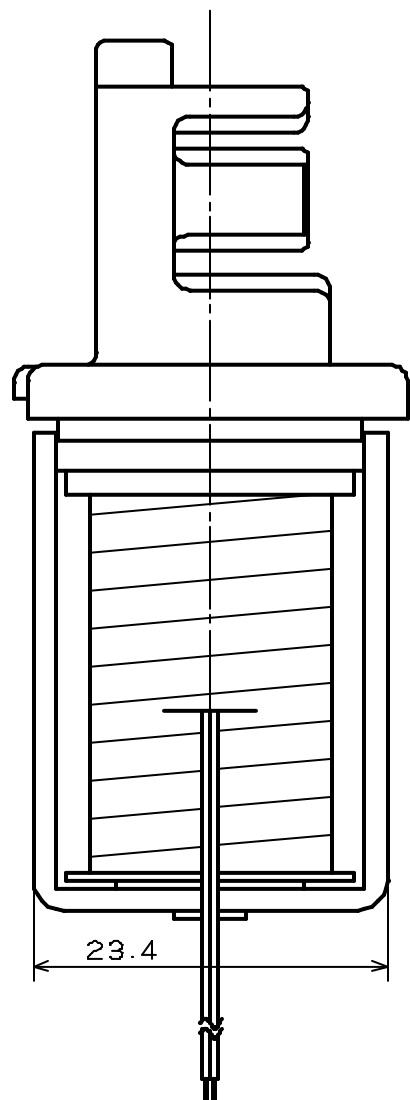
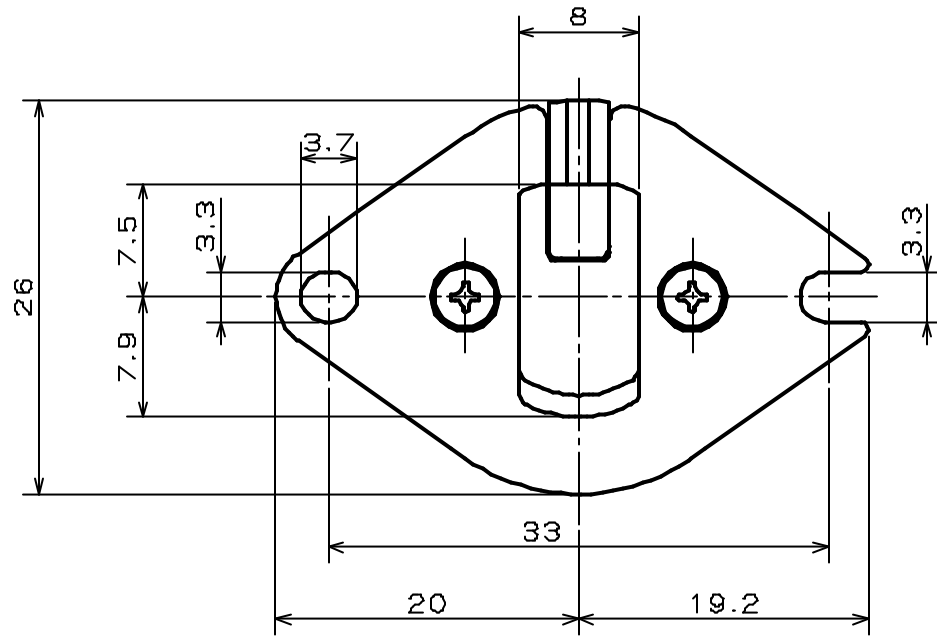


FOR REFERENCE ONLY

# PINCH VALVE

## SPECIFICATIONS for MODEL PW-1015NC

- TYPE : NORMALLY CLOSE
- TUBE DIAMETER : I.D. 1mm. O.D. 3mm
- TUBE MATERIAL : SILICONE
- OPERATING PRESSURE RANGE : 0 ~ 150kPa  
{ 0 ~ 1.5bar }
- AMBIENT TEMPERATURE RANGE : 0 ~ 50°C
- RATED VOLTAGE : 12VDC, 24VDC
- POWER CONSUMPTION : 2.8W
- DUTY CYCLE : CONTINUOUS
- COIL TEMPERATURE INCREASE : MAX. 65°C FROM ROOM TEMPERATURE
- INSULATION CLASS : CLASS E
- DIELECTRIC STRENGTH : 1000VAC FOR 60s



SYMBOL	DATE	DESCRIPTION	PART NO.	PART NAME	MATERIAL	REQD.	NOTE
△			2	PINCHING HEAD	PBT	1	
△			1	TUBE HOLDER	POM	1	
REVISION			PART NO.	PART NAME	MATERIAL	REQD.	NOTE
SCALE	APPROVED	CHECKED	DRAWN	PINCH VALVE		DRAWING NO	
2/1				PW-1015NC		05372-00-S	
A 3							