

# Ring Pump®

## M Series (AC type)



### Features

This is the only series among our product lineup that you can select DC or AC. You have wide range of application.

### Examples of application

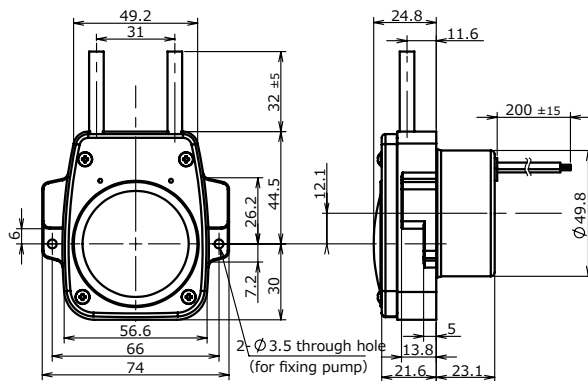
Automatic washing machine, Electrolytic water conditioner, Air pressure adjuster, Automatic car washer and many other applications for detergent supply etc.

### Main specifications

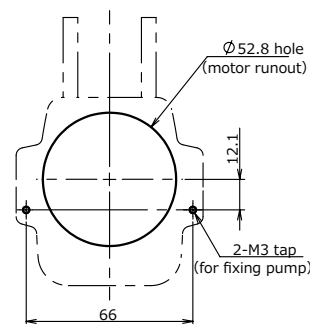
Flow rate (mL/min) ※	5 15 20 35
Tubing	Silicone/Pharmed/SWFT
Motor/Power source	AC 100V
Material of main parts	Base : ABS Cover : PP
Weight (for reference)	Approx. 200g

※ Flow rate is adjusted by selection of motor and inner diameter of tubing.

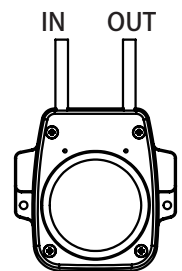
### 【Outline view】



### 【Mounting plate view】



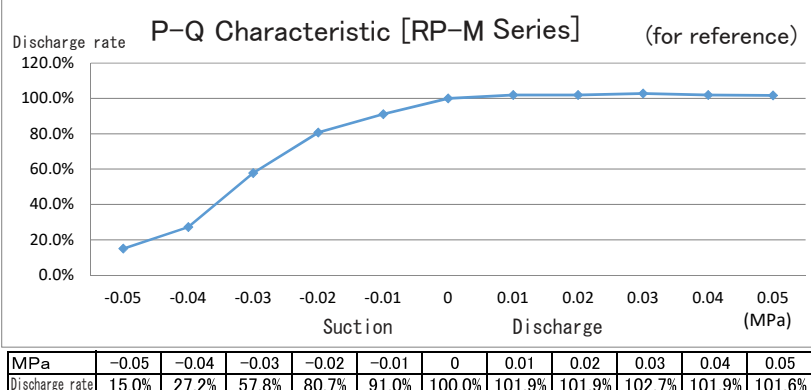
### 【Flow direction】



### Model Lineup

Model Lineup	Voltage (DC/V)	Flow rate (mL)		Tubing		Remarks
		/min	/rotation	Type	ID/OD (mm)	Motor Rotation
RP-M02S-5Z-AC100V	100	5	0.33	Silicone (S)	2 X 4	CW
RP-M02F-5Z-AC100V	100	5	0.33	PharMed (F)	2 X 4	CW
RP-M03S-15Z-AC100V	100	15	0.5	Silicone (S)	3 X 5	CW
RP-M03F-15Z-AC100V	100	15	0.5	PharMed (F)	3 X 5	CW
RP-M04S-20Z-AC100V	100	20	0.67	Silicone (S)	4 X 6	CW
RP-M04F-20Z-AC100V	100	20	0.67	PharMed (F)	4 X 6	CW
RP-M04C-20Z-AC100V	100	20	0.67	SWFT (C)	3.9 X 5.8	CW
RP-M04S-35Z-AC100V	100	35	0.67	Silicone (S)	4 X 6	CW
RP-M04F-35Z-AC100V	100	35	0.67	PharMed (F)	4 X 6	CW
RP-M04C-35Z-AC100V	100	35	0.67	SWFT (C)	3.9 X 5.8	CW

PharMed/SWFT: product of Saint-Gobain SA



※ Variable by material or ID of tubing.